

CAYLPSO SERIES

HEIGHT ADJUSTABLE ELECTRIC BASES

Designed to move with you!



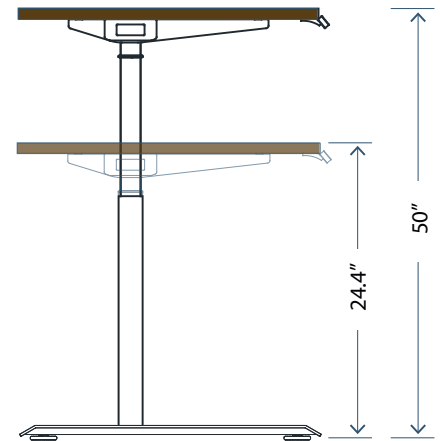
Base Finishes

Black (BL)

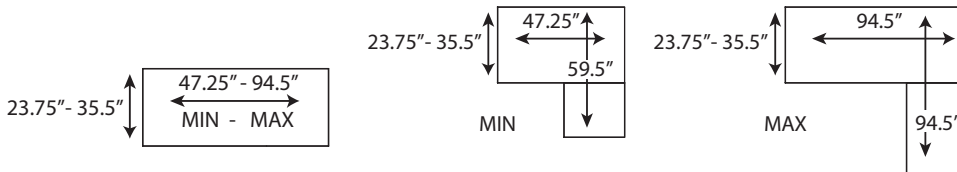
Silver (SL)

Features

1. Quick Assembly - Fold-out leg frame
Extended Height Range: 24.4"- 50" (includes 1" top)
2. Heavy duty 3-stage steel frame
3. 3 programmable memory positions including home button
4. Actuator system with synchronized motor driving each leg
5. Flexibility - designed to work with the **NEW** Innovations tops (sold separately) or RETRO FIT your existing top to this unit
6. Contemporary offset foot leaves room for keyboard tray or other accessories
7. Product is **IN-STOCK**



Width Adjustment:



Model:

CAL-E1-2LEG
CAL-E1-3LEG

Description:

Straight Desk
L Shape Desk

List Price:

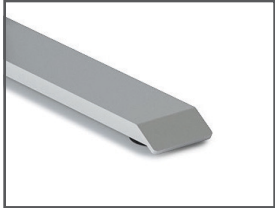
\$1285 (Base Only)
\$1874 (Base Only)





Technical Specifications:

1. Anti-collision function - stops automatically if it hits an immovable object
2. Actuator system with synchronized motor driving each leg
3. Operated at 1.3" per second
4. Whisper quiet <50dB
5. Lifting Capacity:
 - 2-LEG - 265lbs
 - 3-LEG - 320lbs
6. CSA/UL Certified
7. BIFMA Certified



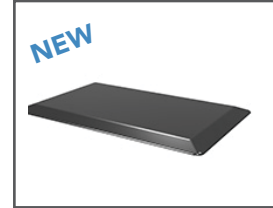
Adjustable glides for easy leveling on uneven surfaces



Easy to use key pad with 3 programmable memory positions including home



Accessory: Wire Management 100-WM1300



Accessory: Anti-fatigue Mat 100-2030AFM



Accessory: Hanging CPU holder 100-2-HPCU

Innovations Laminate Tops

Model:

INV-2448TOP
 INV-3060TOP
 INV-3066TOP
 INV-3072TOP
 INV-2436TOP (Return Only)

Description:

47.25"W x 23.75"D x 1"H
 59.25"W x 29.5"D x 1"H
 65"W x 29.5 D x 1"H
 71"W x 29.5"D x 1"H
 35.5"W x 23.75"D x 1"H

List Price:

\$195
 \$266
 \$279
 \$296
 \$74

Examples:

INV-2448TOP	INV-3060TOP	INV-3066TOP	INV-3072TOP	INV-3060TOP	INV-3066TOP	INV-3072TOP	
				INV-2436TOP or INV-2448TOP	INV-2436TOP or INV-2448TOP	INV-2436TOP or INV-2448TOP	
+ CAL-E1-2LEG				+ CAL-E1-3LEG		+ CAL-E1-3LEG	

Laminate Top Finishes:

		NEW			NEW			NEW
Autumn Maple (AM)	Evening Zen (EZ)	Grey (GR)	Grey Dusk (GD)	Hardrock Maple (HM)	Pure White (PW)	Royal Mahogany (RM)	Sugar Maple (SM)	Winter Wood (WW)



Heartwood Distributors Ltd.

Choose high quality, price sensitive products that are **IN-STOCK** and ready for next day shipping.

www.heartwooddl.com

Contact your local dealer:

251 Adams Rd, Kelowna, BC V1X 7R1
 T: 1 800 567 3060
 F: 250 765 1213