

ARES



High-Back Task/Meeting Chair

Features:

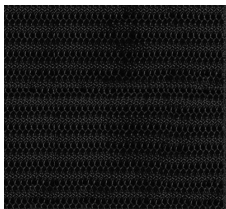
- Contoured mesh back & comfortable mesh seat
- Multi-position tilt lock & tilt tension adjustment
- Adjustable lumbar support
- Pneumatic seat height adjustment & seat depth adjustment
- Adjustable height arms with polyurethane pad armrest
- Dual wheel casters, ideal for soft or hard floors
- ANSI/BIFMA approved construction
- Assembly required

Dimensions:

Back Height: 46½" - 50½"
Seat Height: 17½" - 21½"
Seat Depth: 19¾"
Seat Width: 20¾"
Arm Width: 26 ¾"

Max Recommended Weight Capacity: 300lbs

Available Finishes:



Black Mesh Back
Black Mesh Seat

Model: ARE-HB-BL **List Price:** \$655



ARE-HB-BL



JUPITER SERIES

Stylish, modern design to complement any workspace!

